

## Quick Reference Key

FY is set by default to most recent. Only one year may be selected at a time. E.g. FY09 = FY08/09, FY10 = FY09/10 etc.

- 1 FY is set by default to most recent. Only one year may be selected at a time. E.g. FY09 = FY08/09, FY10 = FY09/10 etc.
- 2 Select segment to filter dashboard by council or application type (further details on page 2)
- 3 View filters applied to the dashboard segment
- 4 Focus mode to enlarge segment in full page view

- 5 Scroll
- 6 Hover over chart segment for more detail
- 7 Page navigator
- 8 Number of approved and refused applications

- 9 Net determination days= Gross days - Stop the clock \*
- 10 Number of council staff working on Development Applications
- 11 Reset dashboard to default view
- 12 Share via LinkedIn

\*Further Stop the clock definitions found on page 6

- 13 Share via Twitter
- 14 Share via Facebook
- 15 Share URL
- 16 Full screen mode

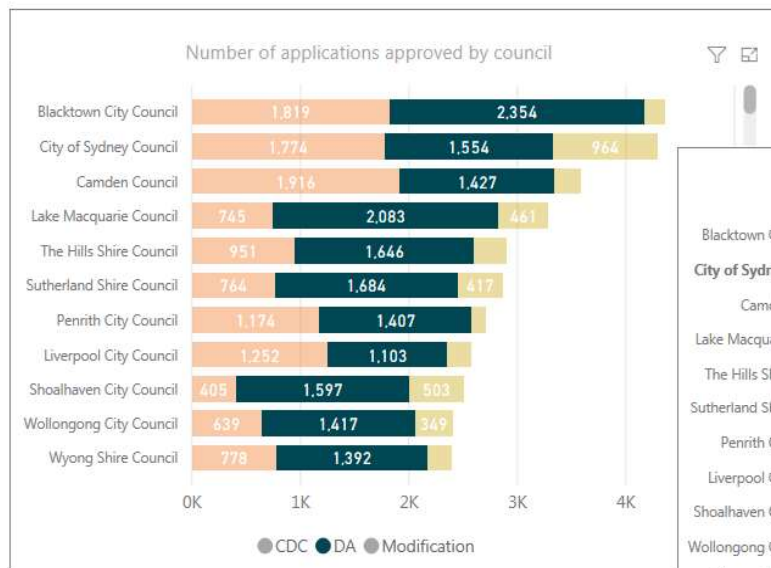
## 1 Default view



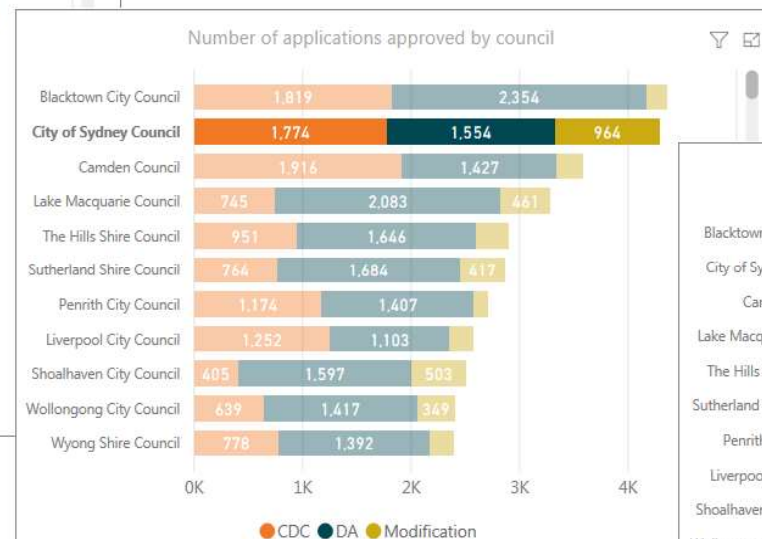
## Quick Tips

- 1 The default view is set to “all” councils. Selecting any filtered view (as outlined in steps 2, 3 and 4 below) will dynamically change all the visible information on the dashboard to reflect the selected filter
- 2 You can select either the CDC, DA, or Modification icons at the foot of the graph. This filter includes all councils which show that development type
- 3 You can filter by one specific council by clicking on the council name
- 4 You can filter by one application type within one specific council by clicking on a segment of the bar graph
- 5 Double clicking on any filtered segment or clicking “Reset”, removes all filters and return the dashboard to default view
- 6 To view filters applied to any part of the Dashboard, click the “filter” icon

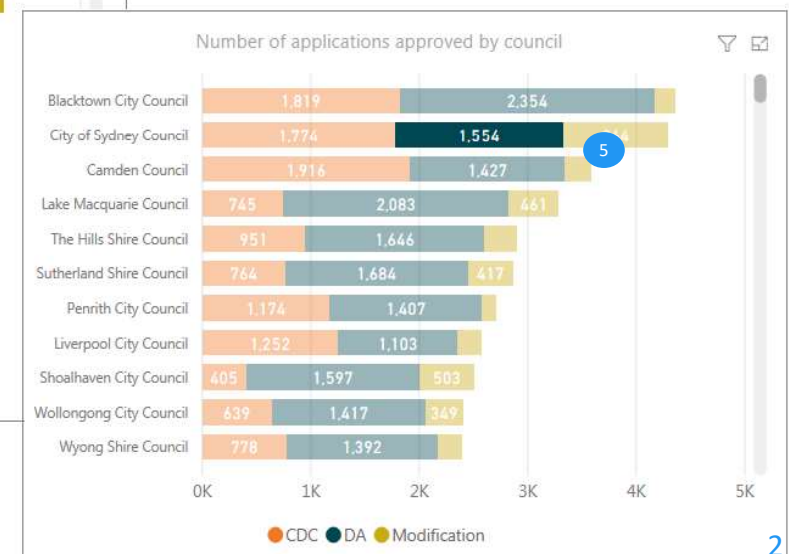
## 2 Filter by application type



## 3 Filter by one council



## 4 Filter by application type & one council

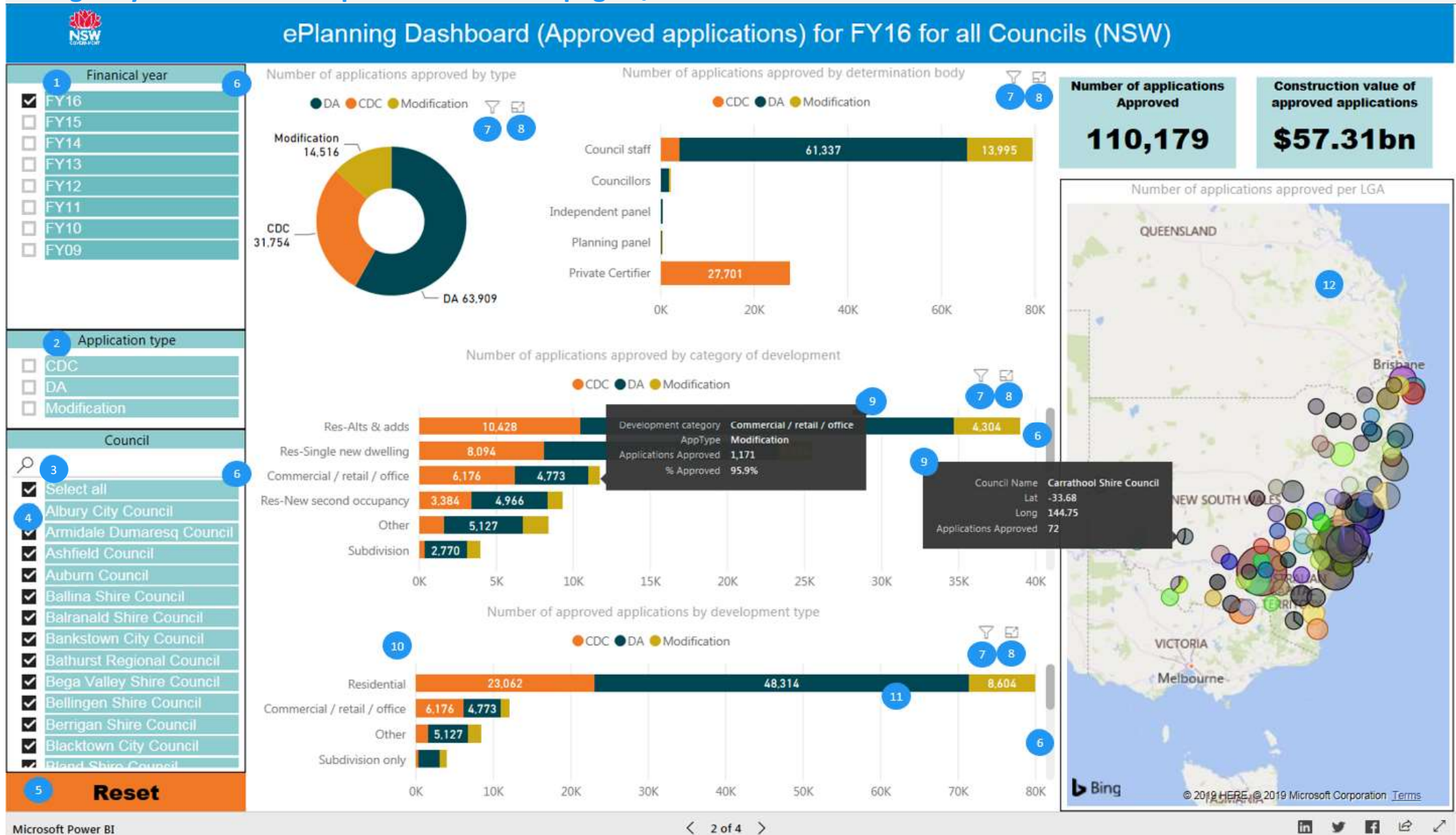


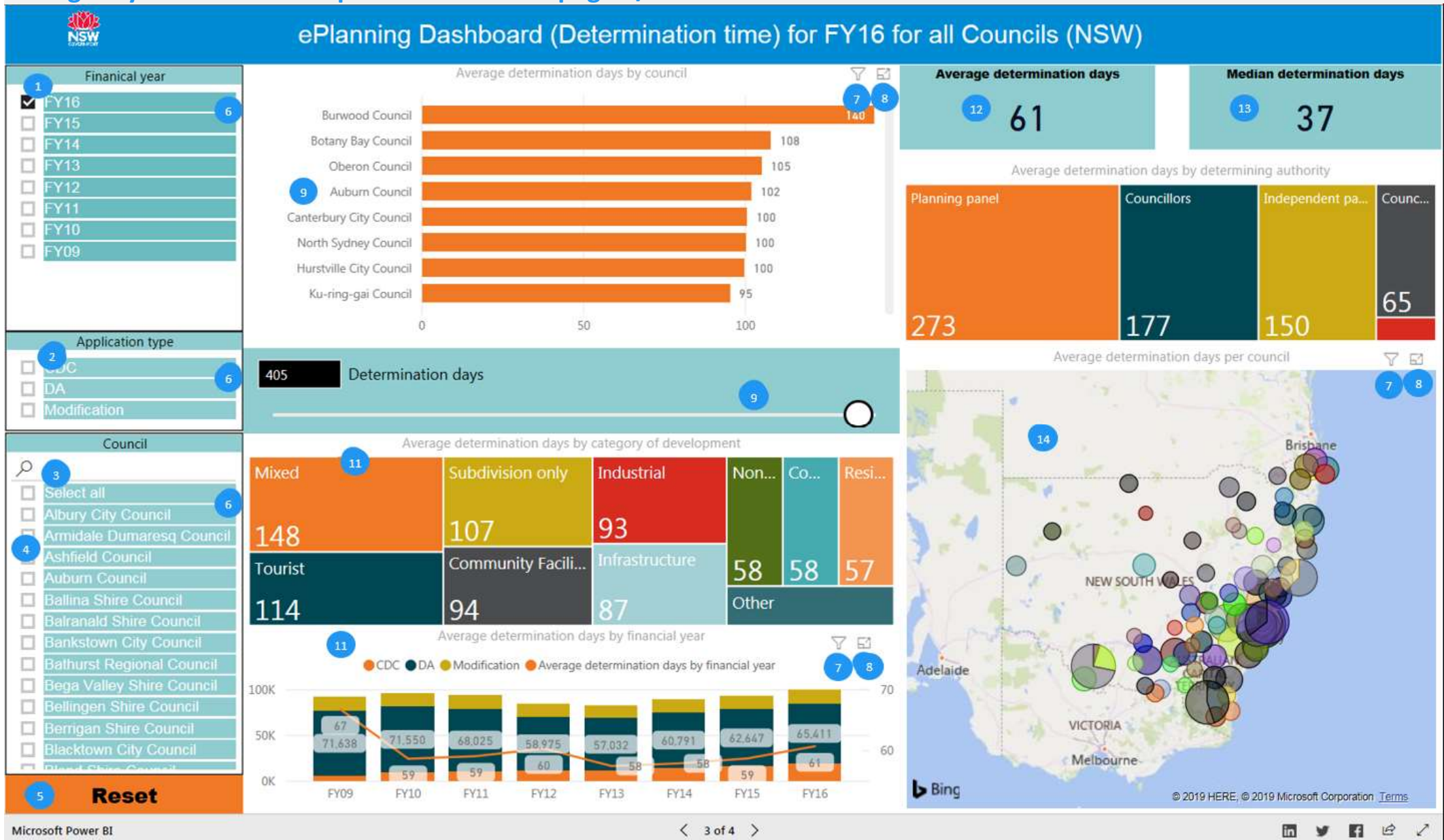
Filters and slicers affecting this visual

**APPLICATION TYPE**  
is DA, CDC, or s96

**FILE YEAR**  
is FY18

**Included (1)**  
City of Sydney Council (Council)





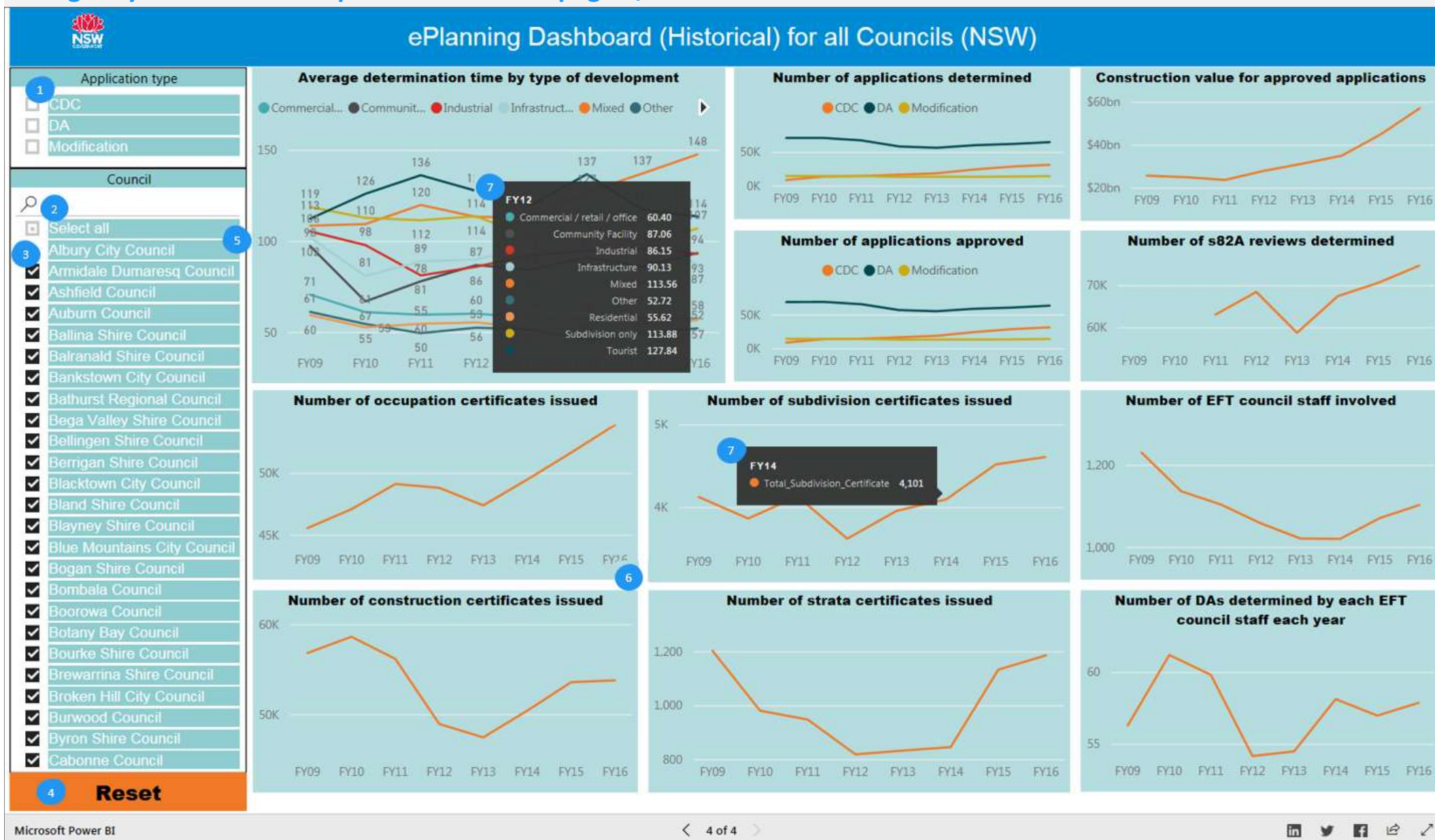
### Quick Reference Key

- 1 Filter dashboard by Financial Year/s
- 2 Filter dashboard by application type/s
- 3 Search by council name
- 4 Filter dashboard by council/s or all

- 5 Reset dashboard to default view
- 6 Scroll list
- 7 View filters applied to dashboard segment
- 8 Focus mode to enlarge segment in full page view

- 9 Click council to filter dashboard
- 10 Slide to filter by determination days
- 11 Click segment to filter dashboard
- 12 Average based on gross days

- 13 Median based on gross days
- 14 Double click or scroll to zoom, click & drag to move



### Quick Reference Key

- 1 Filter dashboard by application type/s
- 2 Search by council name
- 3 Filter dashboard by council/s
- 4 Reset dashboard to default view
- 5 Scroll list
- 6 Focus mode to enlarge segment in full page view
- 7 Hover over chart segment for more detail

## Calculating determination times

### Approval Times

The data for approval times for residential development, non-residential development, and total development shows gross approval times for both DA and CDCs issued by councils. Private certifier approval times are not included.

Residential development includes: Residential - Alterations and additions, Residential - Single new dwelling, Residential - New second occupancy, Residential - New multi unit, Residential - Seniors Living, and Residential - Other.

Non-residential development includes: Tourist, Commercial / retail / office, Mixed, Infrastructure, Industrial, Community facility, Subdivision only, Other, and Non standard category.

### Calendar Days

The Department has calculated time using calendar days (including weekends) using dates of lodgement and determination supplied by councils.

The gross determination time is simply the difference between date determined and date lodged except where the determination date was the same as the lodgement date, where the gross determination time was set to one day.

For net determination time, stop-the-clock time and referral times were supplied in calendar days so that net time is also in calendar days.

### Stop-the-Clock Time

This is the time taken for further information to be sought from the applicant after a DA is submitted. When the request is made the clock is 'stopped' until the information is received.

The Environmental Planning and Assessment Regulation 2000 currently allows councils to set a time limit for applicants to provide further information on their DA. In practice, it is understood that some DAs are put on hold indefinitely pending information from the applicant, leading to some inefficient practices. Stop the clock events usually occur where applications are lodged with inadequate information, lie dormant for a lengthy period and are eventually 'closed off' by the council with a formal rejection or are withdrawn by the applicant. These incidences contribute to longer determination times.

Councils have also indicated that as their aim is to provide a service to DA applicants, they will guide an applicant through the DA process and request additional information as required rather than refuse or reject DAs. This adversely impacts on councils' average determination times as it increases the time taken to determine applications.

### Mean determination time

The mean of a set of data values is the sum of all of the data values divided by the number of data values.

### Median determination time

The median of a set of data values is the middle value of the dataset when it has been ordered. If the number of values in the dataset is even, then the median is the average of the two middle values. The use of the median provides an alternative method of analysing the data to a mean which may be skewed by a relatively small number of extremely high or low values in a dataset.

### Numbers rounded

Numbers present in the report may be rounded, and not an exact true number.

### More Info

For further information about Local Development Performance Monitoring, please visit the NSW Planning portal website (<https://www.planningportal.nsw.gov.au/>).