

Snowy Mountains draft Master Plan at a glance

The Snowy Mountains Special Activation Precinct draft Master Plan sets out the 40-year vision to facilitate new tourism opportunities, more accommodation and housing options, improved community facilities and better transport connections. The plan aspires to create a year-round tourism destination for the Snowy Mountains which will provide more stable local employment and economic prosperity.

JINDABYNE PRECINCT



The draft Master Plan is proposing:

- Improved public domain and town centre
- Better foreshore connections and open spaces
- New heritage centre to celebrate history and culture
- Improved community infrastructure and services
- New school, TAFE NSW, Country Uni centre
- New residential developments and aged care facilities
- New mountain bike and adventure park
- Precinct wide environmental management systems
- New Southern Connector Road
- Better and safer pedestrian access and walkways
- Better connectivity to resorts



Photos courtesy of Destination NSW



Snowy Mountains draft Master Plan at a glance

ALPINE PRECINCT



The draft Master Plan is proposing:

- Improved trails and tracks
- Better connectivity to resorts
- New and upgraded accommodation and infrastructure at Resorts
- Protection of the natural environment
- New and improved campgrounds and eco-cabins
- Park & Ride facilities and smart transport
- Viewing platforms and designated snow playing areas
- High performance sports training facilities



Jindabyne Catalyst Precinct

The Jindabyne Catalyst Precinct is made up of five sub-precincts and includes a range of development types and land uses, including both urban renewal and new land release opportunities for housing, tourism, and sports and education uses.



Western Lake Jindabyne sub-precinct

- Diverse range of leisure, recreation and tourism uses
- Opportunity for an eco-tourism resort, holiday park, more access to the lake and improved connections to the Town Centre

Jindabyne Town Centre and Foreshore sub-precinct

- Strong focus on creating a welcoming hub for residents and visitors and improved connectivity between the Town Centre and lake.
- Will be the centre of business, community facilities and tourist activities
- Includes development of Lake Jindabyne Foreshore Trail

Mountain bike and adventure park sub-precinct

- Allows for a range of tourism and recreation opportunities
- Includes a mountain bike trail network and an adventure park
- Potential of a gondola, connecting to foreshore

Mountain Bike and Adventure Park

Southern Connector Road

Southern Connector Road

- A new road corridor providing safe connection from the eastern to western extents of Jindabyne
- Improved amenity and access along Kosciuszko Road into the Town Centre

Sports and Education Precinct

Sports and Education sub-precinct

- A hub of education, sports, recreational and community uses
- New primary and secondary school and a high-performance athlete training centre
- Provision for more sporting fields and an area for school programs



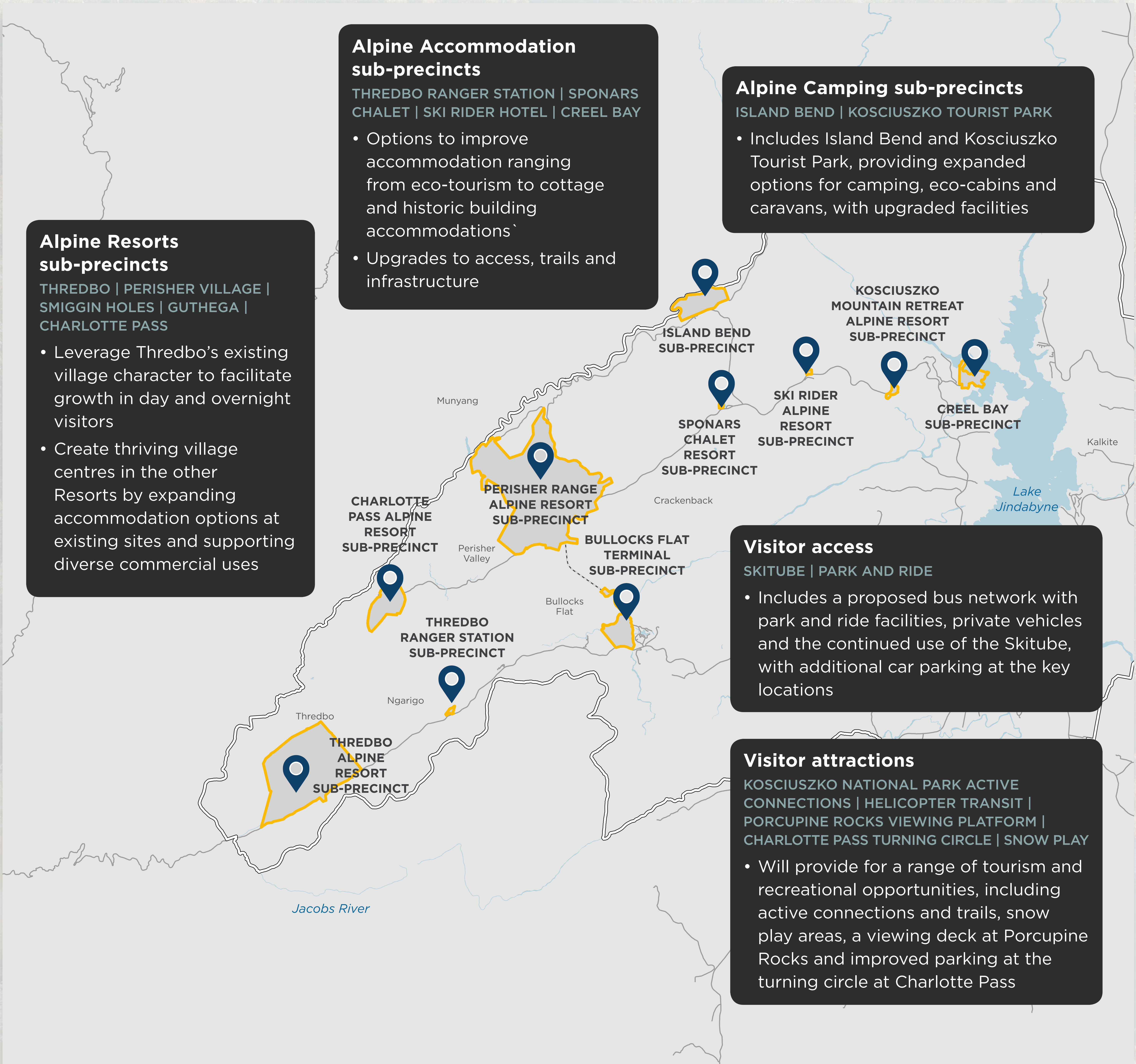
Jindabyne Growth Precinct

The Jindabyne Growth Precinct is made up of five sub-precincts including residential growth areas in Jindabyne West and East Jindabyne, industrial growth at Leesville and tourism opportunities south of Barry Way.



Alpine Precinct

The Alpine Precinct is made up of eleven sub-precincts with potential for development for tourism and related uses. Future development allows for increased bed numbers and year-round recreation and accommodation offerings but does not propose any new resorts. Improving transport to and from the mountain is a key focus along with a continued focus on protecting the environment.



Planning framework

Based on the technical investigations, the draft Master Plan sets out performance-based controls to provide certainty and flexibility within the planning framework.

This legislative framework will protect and enhance sensitive environmental values, protect public safety and appropriately plan for a diverse range of land use types.



Glossary

DCP
Development Control Plan

LEP
Local Environment Plan

SEPP
State Environmental Planning Policy



Snowy Mountains
SPECIAL ACTIVATION PRECINCT

