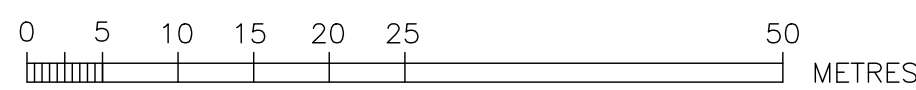


PLAN

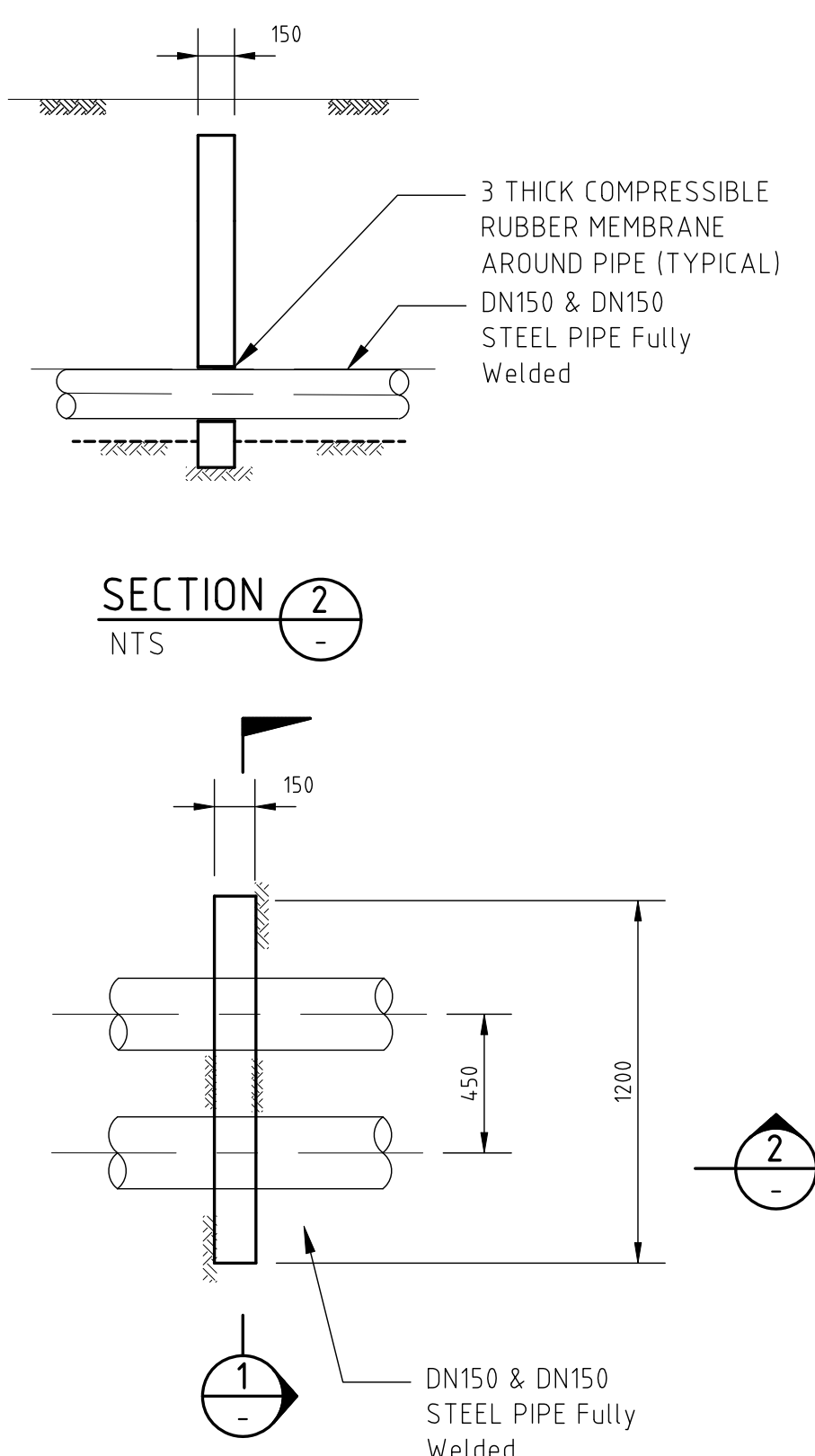
SCALE: 1:500



LEGEND

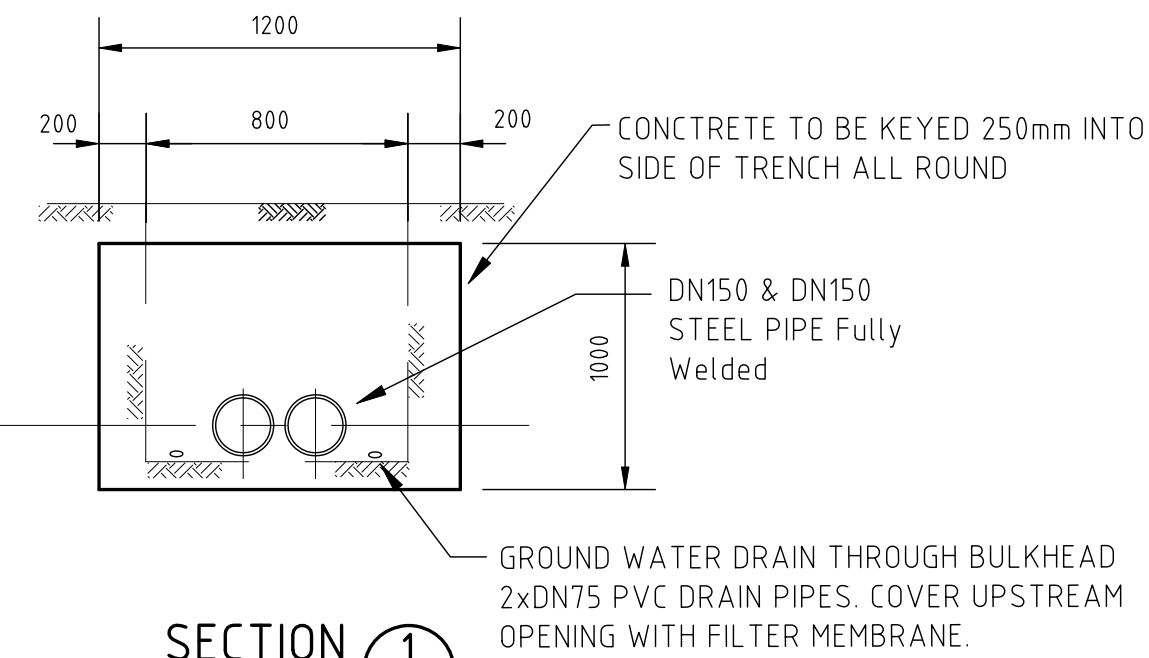
- DN150 Steel: PROPOSED TWIN STEEL (WATER AND AIR) MAINS
- DN450 Steel: PROPOSED STEEL WATER MAIN
- DN200: EXISTING WATER MAIN
- DN200: FUTURE WATER MAIN
- TRENCH STOP (APPROX LOCATION)
- CONCRETE ANCHOR BLOCKS
- GRAVITY SCOUR AND CHAMBER
- AUTOMATIC AIR VALVE
- CONTROL VALVE
- TEE WITH DN50 HYDRANT TAKE-OFF (FAN GUN OR OTHER)

NOTES :-
ALL WORK TO BE CARRIED OUT TO THE REQUIREMENTS OF THE WATER SUPPLY CODE OF AUSTRALIA - WSA 03-2002
APPROXIMATELY 114m OF TWIN DN150 STEEL MAIN TO BE LAID
CONTRACTOR TO CONFIRM LOCATION OF EXISTING SERVICES WITH PERISHER BLUE STAFF PRIOR TO COMMENCING EXCAVATION



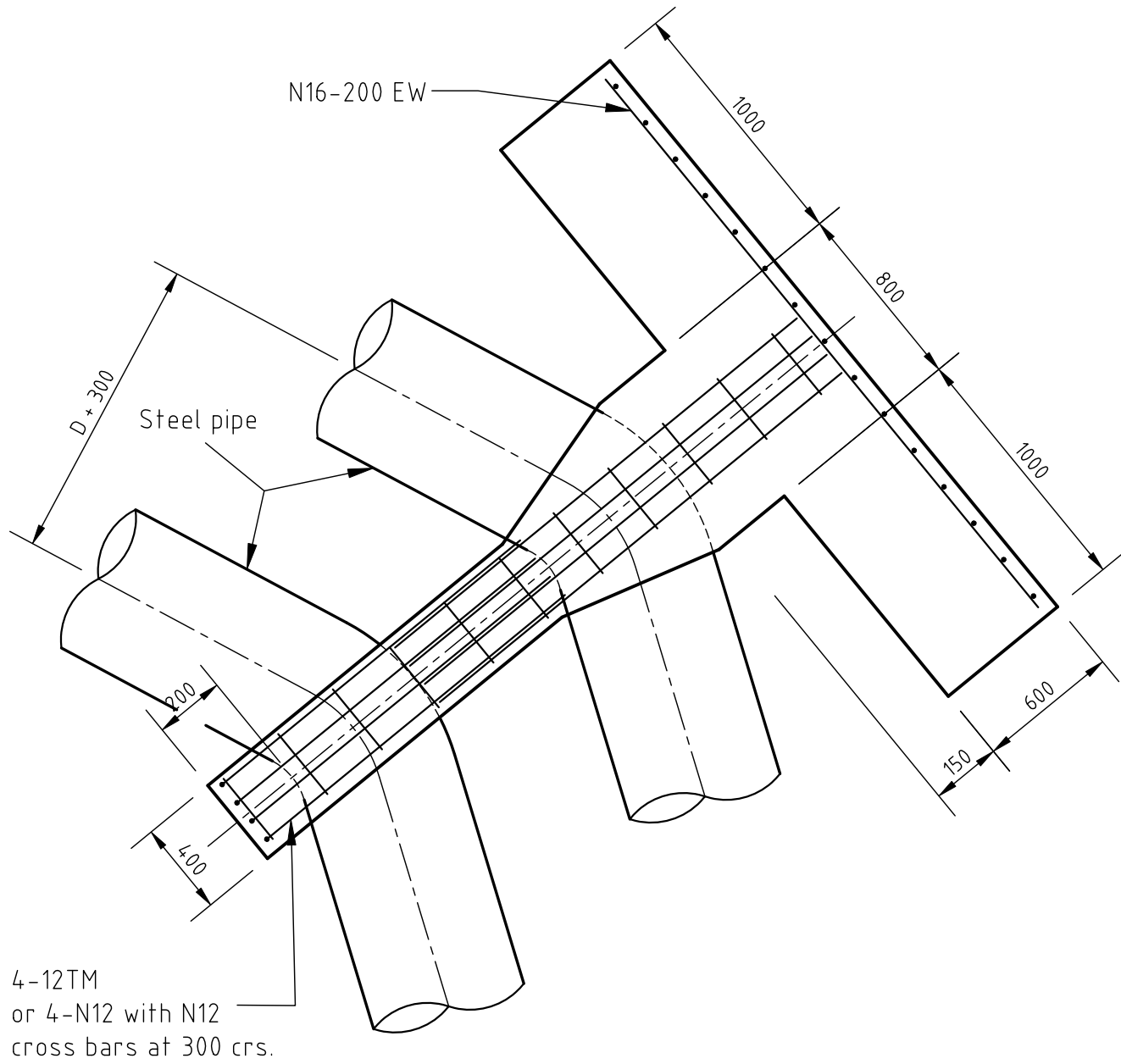
SECTION 2

NTS



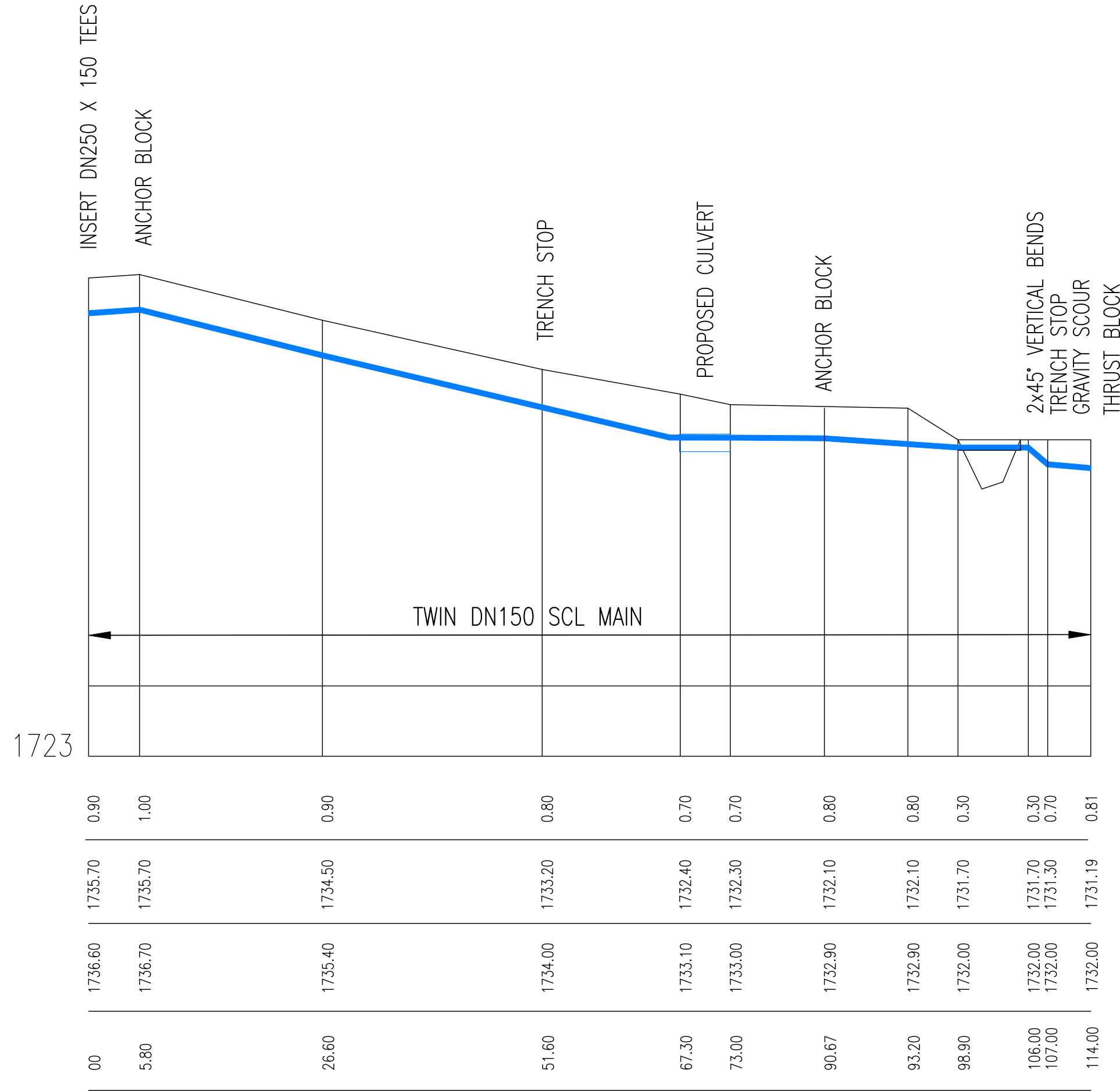
SECTION 1

NTS



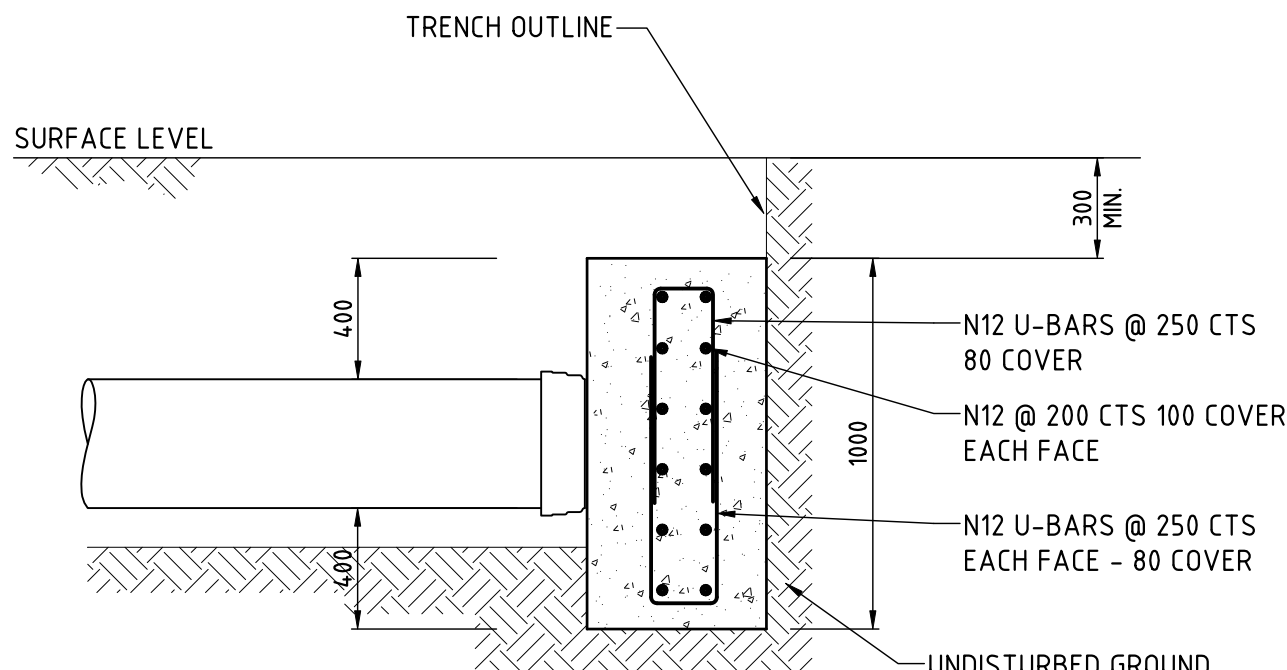
TYPICAL ANCHOR BLOCK PLAN

NTS



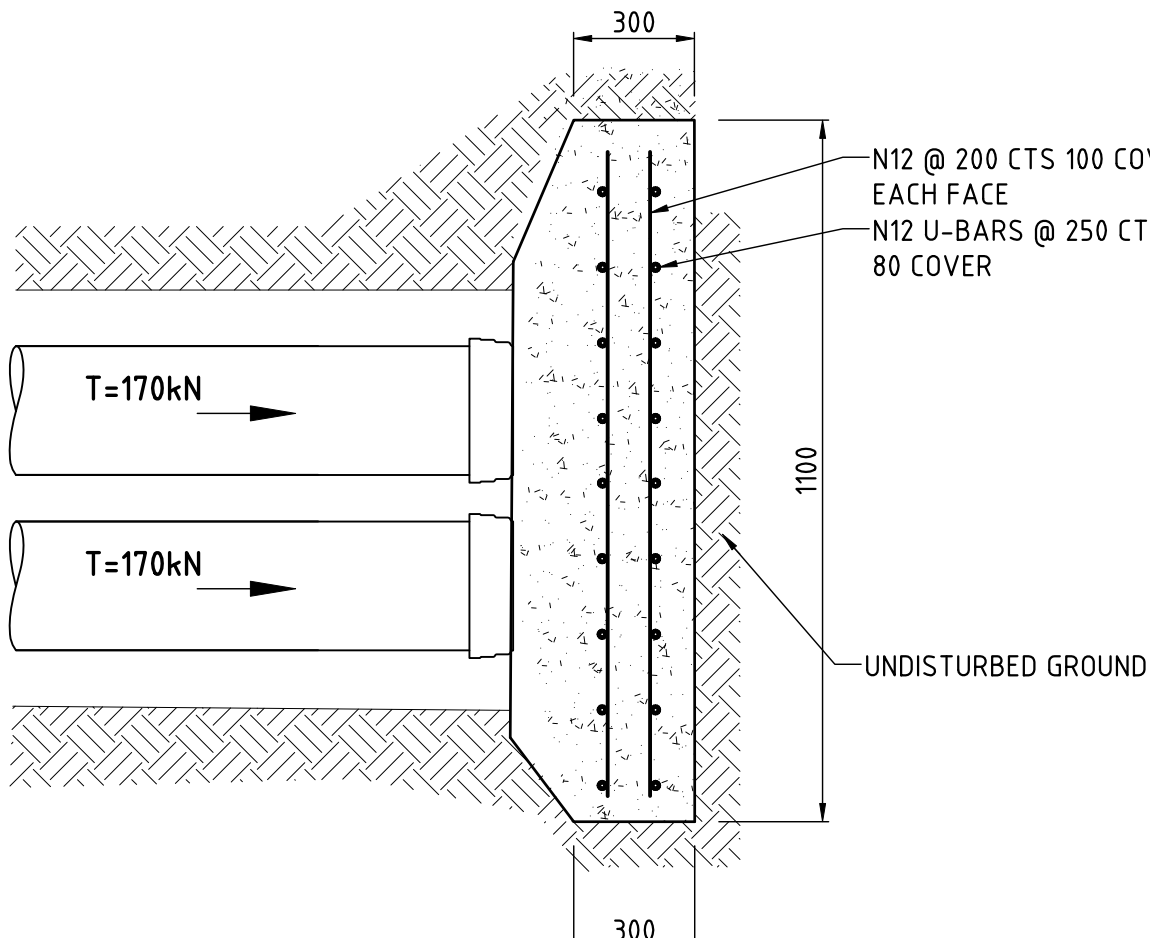
PIPE LONGSECTION

SCALE: 1:500 HOR. 1:125 VERT.



END THRUST BLOCK ELEVATION

SCALE 1:20



END THRUST BLOCK PLAN

SCALE 1:20
BASED ON SOIL ABP OF 55 kPa
AND DESIGN PRESSURE OF 120m HEAD

Planning, Industry & Environment
Issued under the Environmental Planning and Assessment Act 1979
Approved Application No DA 10115
Granted on the 9 September 2021
Signed MB
Sheet No 31 of 63

		SCALE AS SHOWN		DATUM AHD		DRAWN EL DATE 5/2/21		DESIGNED EL DATE 5/2/21		APPROVED		DATE 5/2/21		CLIENT PERISHER BLUE PTY LIMITED P.O. BOX 42 PERISHER VALLEY NSW 2624		MOUNT PERISHER SNOWMAKING LINE PERISHER BLUE SKI RESORT PERISHER VALLEY, NSW		FILE NO. 3014	COMPUTER REF. MT PER. DOUBLE
1 ORIGINAL ISSUE FOR DA APPROVAL		EL		25/2/21		BY		APPROVED		DATE		SHEET NO. SHEET 1 OF 1		LOCAL GOVT. AREA COOMA SHIRE COUNCIL		BASE DOUBLE CHAIR - PLAN AND LONGSECTION		SHEET NO. 3014	REVISION 1
DESCRIPTION		ISSUE / REVISION		ALL DIMENSIONS IN MM UNLESS OTHERWISE STATED		EDWARD LUCAS, MIE Auhl, OPRG REGISTERED PROFESSIONAL ENGINEER No.118690 NPER-3 REGISTRATION CATEGORIES - CIVIL		P.O. BOX 1219, CROWS NEST, N.S.W. 1585 TEL 0411 078 394 FAX (02) 8608 5889		ABN 82 081 237 890		DRAWING NO. 3014-DA-150							