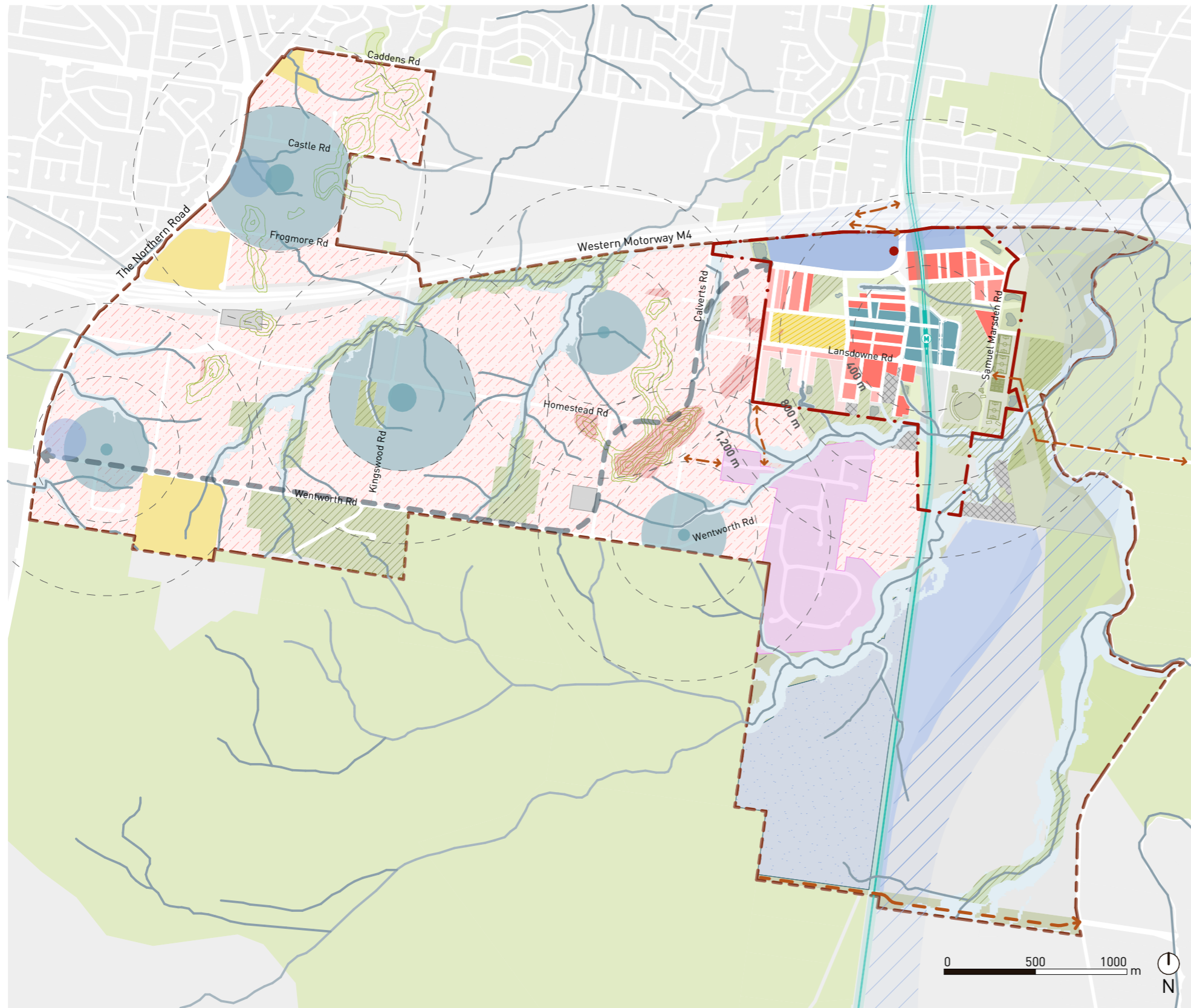


Orchard Hills Structure Plan



- Orchard Hills Precinct Boundary
- Stage 1 Rezoning area
- Orchard Hills Metro Station
- Metro Line
- Cumberland Plain Conservation Plan - Avoided land
- Future Outer Sydney Orbital (OSO) Stage 1 corridor
- Riparian Corridors
- Existing Watercourse
- Existing Wianamatta - South creek corridor (RE1)
- Existing Environmental Conservation lands (C2)
- Ridge line
- Existing School
- Investigation site for educational facilities - subject to further review
- Potential future road links to unlock development - subject to further investigation and funding
- Potential future town centre bypass road extension - subject to further investigation and funding
- Neighbourhood Centre - retail ground floor in centre. 4 Storey height limit within 400m.
- Small Neighbourhood Centre - mixed use core up to 4 storeys. 3 storeys within 200m.
- Residential investigation area (including supporting urban uses and infrastructure)
- Local Centre
Shop top housing with ground floor retail (with first floor commercial in the central core)
Predominantly 6-8 storey built form with towers at key intersections and adjacent metro.
- Residential Core
4-6 storey apartment buildings
- 2-3 storey homes - Mix of terraces and detached dwellings
- 1-2 storey homes - Mix of terraces and detached dwellings
- Large lot residential
- Employment Land
- Recreation Land
- Preferred location for future infrastructure
- Potential future industrial
- Executive Housing
- Future land use subject to outcome of the CPCP Modification
- Areas of potential slope instability
- Potential location for fire station
- Sydney Metro Stabling Facility

Disclaimer: The Department of Planning, Housing and Infrastructure makes every effort to ensure the quality of information available on this map. Before relying on the information on this map, users should carefully evaluate its accuracy, currency, completeness and relevance for their purposes. The Department cannot guarantee and assumes no legal liability or responsibility for the accuracy, currency or completeness of the information

